



METROLINK

POLICE TASK FORCE

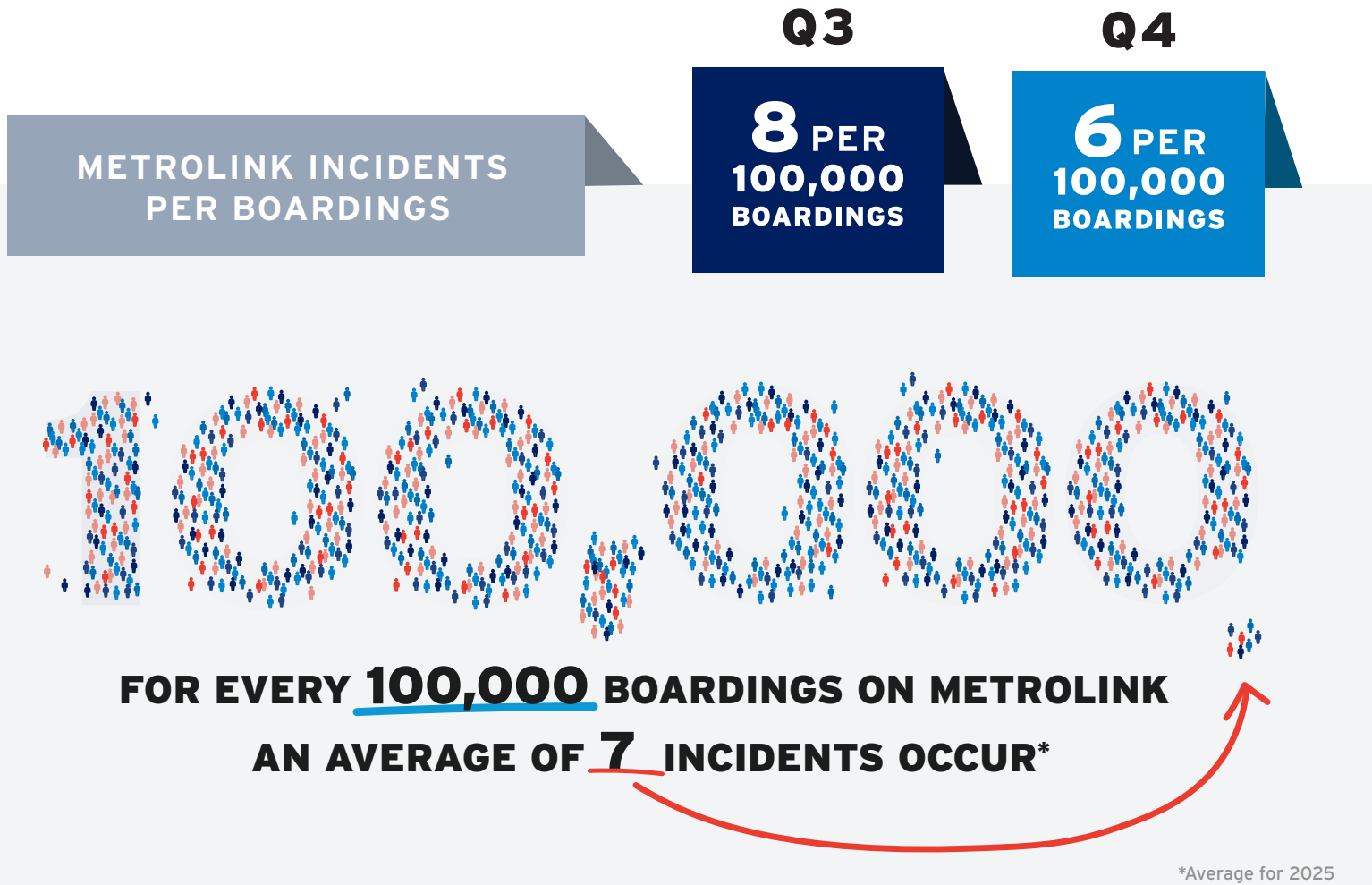
SEMIANNUAL REPORT

JUL - DEC 2025

TASK FORCE INCIDENTS

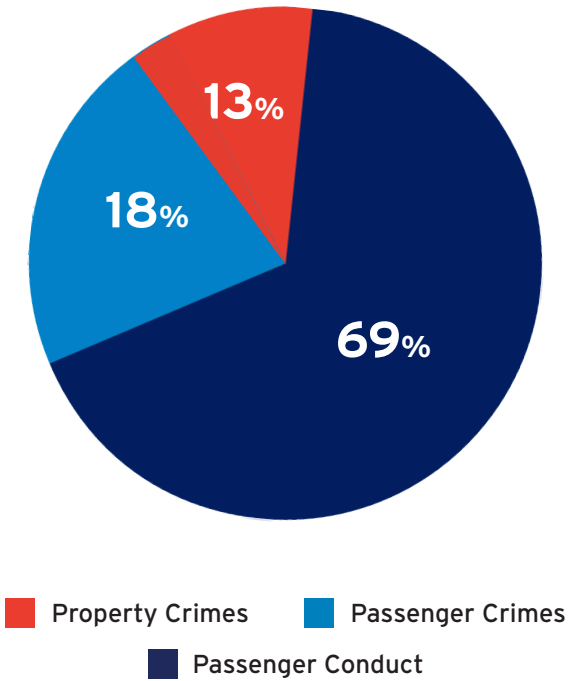
A taskforce incident is defined as an event where one or more offenses are committed by the same offender(s) at the same time & location.

	2023	2024	2025
QUARTER 1	236	119	135
QUARTER 2	249	168	100
QUARTER 3	228	132	161
QUARTER 4	167	101	103
TOTAL	880	520	499



SEMIANNUAL INCIDENTS BREAKDOWN

BOARDING INCIDENTS BY TYPE



	Q3	Q4
PASSENGER CONDUCT	3	1
PROPERTY CRIMES	>1	>1
PASSENGER CRIMES	1	1

INCIDENTS PER 100,000 BOARDINGS
DOES NOT INCLUDE
WARRANT ARREST + WEAPON POSSESSION

REAL TIME CAMERA CENTER

The Real Time Camera Center is comprised of 15 Metro dispatchers.

	Q3	Q4
INCIDENTS FOUND	230	342
CONTACTED POLICE	76	74

RTCC INCIDENT HIGHLIGHTS:

- 36% Welfare Checks & Sick Cases
- 6% Trespassing
- 14% Prohibited Conduct

LAW ENFORCEMENT ASSISTANCE: VIDEO REQUESTS

The Real Time Camera Center team received video requests from over 35 different agencies to help solve their cases in the region. These include Local, State, College, and Federal Law Enforcement agencies across the Missouri and Illinois' Metro Area.

Q3	Q4	2025
127 video requests	109 video requests	801 video requests

METRO SECURITY TEAM

Metro has 192 Transit Security Specialists (TSS) and Contracted Allied Security Officers responsible for patrolling trains and checking fares.

	Q3	Q4	2025
TRAIN PATROLS	5,137	6,315	18,655
FARE CHECKS	35,208	36,194	141,476

DEFINITIONS GLOSSARY

INCIDENT: An event where one or more offenses are committed by the same offender(s) at the same time & location

INCIDENT REPORT: unofficial document of a security-related incident, completed by officers on the MetroLink Task Force; not the official crime report

OFFENSE: criminal offense(s) that occur during an incident

OFFENSE TYPES:

PASSENGER CONDUCT: crimes that are less serious, but that profoundly affect passengers' perception of security and that consume a disproportionate amount of time and resources available to transit police and security forces (e.g., curfew & loitering laws, disorderly conduct, fare evasion, drug abuse violations, driving under the influence, drunkenness, sex offenses, trespassing)

PROPERTY CRIMES: crimes that involve the property of the transit agency or the personal property of passengers & employees property (e.g., arson, burglary, larceny/theft, motor vehicle theft, vandalism)

PASSENGER CRIMES: all crimes that passengers/employees generally consider a potential threat to their safety (e.g., assault, rape, robbery, suicide/attempted suicide)

PROACTIVE POLICING: police work that deters crime, reduces disorder, reduces fear of crime, or remedies specific concerns in a given area; police action that occurs before a crime is committed



Submitted by: 

Kevin B. Scott
EVP of Public Affairs and Security

These are unofficial incident-based statistics, please contact the individual police departments for official data.